

REAL

V

n

C

Getting Up to Speed

with VNC Server

Enterprise Edition 4.4



Copyright and Confidentiality

Copyright Statement

Copyright © RealVNC Ltd, 2008. All rights reserved.

No part of this documentation may be reproduced in any form or by any means or be used to make any derivative work (including translation, transformation or adaptation) without explicit written consent of RealVNC.

Confidentiality Statement

All information contained in this document is provided in commercial confidence for the sole purpose of use by an authorised user in conjunction with RealVNC's products. The pages of this document shall not be copied, published or disclosed wholly or in part to any party without RealVNC prior permission in writing, and shall be held in safe custody. These obligations shall not apply to information which is published or becomes known legitimately from some source other than RealVNC.

Registered office:

VNC House,
Sturton Street,
Cambridge,
CB1 2SN
United Kingdom
www.realvnc.com

Contents

Migrating to VNC Server 4.4.....	4
VNC Server	5
Changes to the Start menu	5
Where have the Start menu options gone?	5
Configuring VNC Server	6
Configuring Security.....	7
Configuring Connections.....	8
Configuring Inputs	9
Configuring Sharing.....	10
Configuring Desktop	11
Configuring Capture Method.....	12
Legacy	12



Migrating to VNC Server 4.4

VNC Server Enterprise Edition 4.4 provides an updated and simplified user interface for both the Server and Viewer, while retaining all of the advanced settings for expert users. We hope that these changes will make VNC Server more helpful and easier to use.

This document aims to assist you in getting up to speed quickly with the new VNC Server 4.4 user interface. It will show each of the previous Server Properties tabs and the corresponding new interface.

If you have any questions regarding the new version, please do not hesitate to contact us at

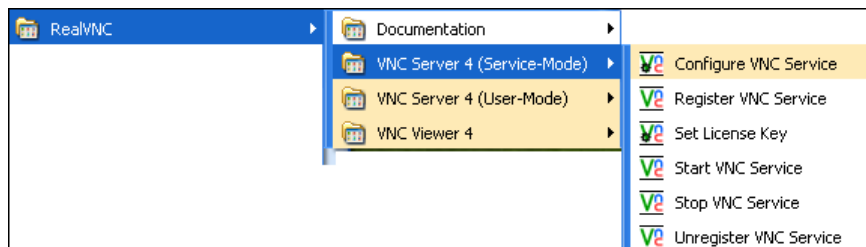
4.4preview@realvnc.com

VNC Server

Changes to the Start menu

The first changes you will notice will be in the Windows **Start** menu.

Previously, the RealVNC server entry in the Windows start menu looked like this:



The menus for VNC Server 4.4 Enterprise Edition have been streamlined:

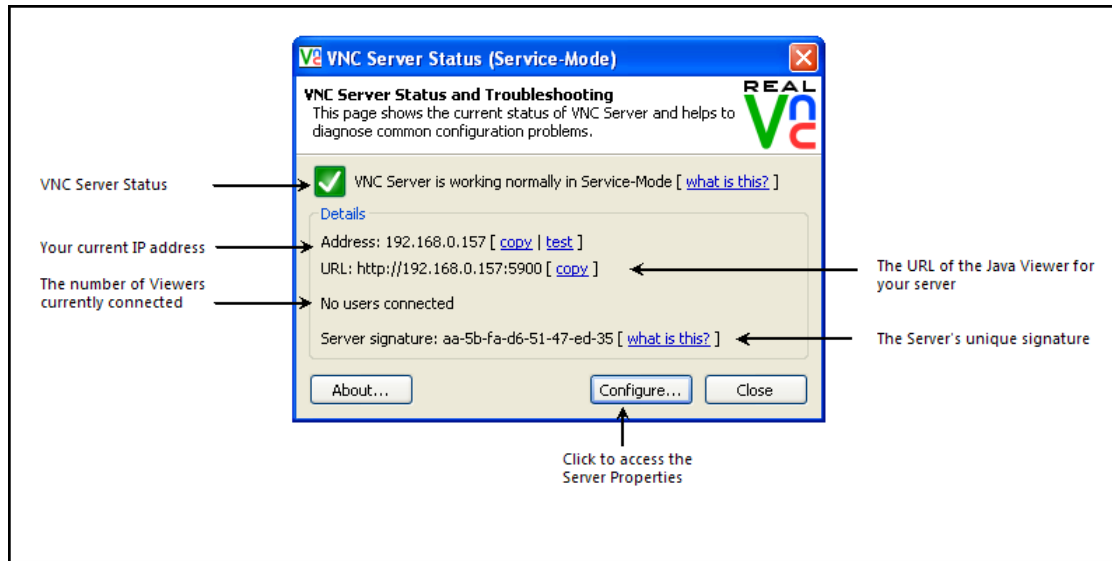


Where have the Start menu options gone?

Option	Where is it?
Configure VNC Service	On the new VNC Server Status dialog, click Configure
Register VNC Service	VNC Service is registered during installation. Option removed.
Set License Key	Start → All Programs → RealVNC → Advanced → Enter Server License Key
Start VNC Service	VNC Service now starts when Windows starts. Option removed.
Stop VNC Service	Right-click on the VNC task tray icon, and select Stop VNC Server .
Unregister VNC Service	Unregistered on uninstallation

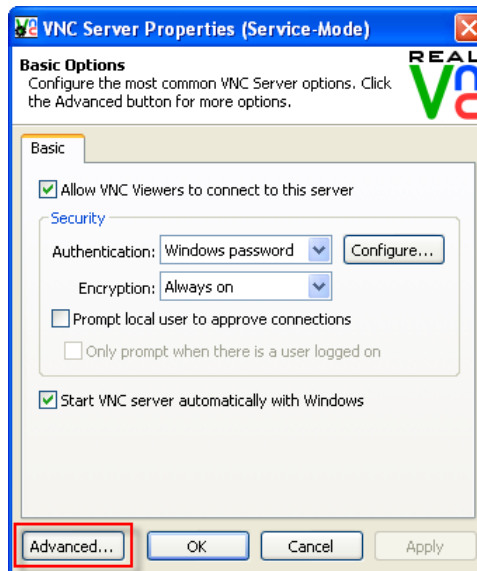
Configuring VNC Server

In VNC Server 4.4, to access the VNC Server configuration, double-click on the VNC icon in the windows task tray. This displays the VNC Server Status dialog:



The VNC Server Status dialog shows the current status of the VNC Server, your IP address, the number of users currently connected to your VNC Server, and the VNC Server signature.

Click **Configure** to access the Server Properties. This will display the new VNC Server Properties dialog as shown below:

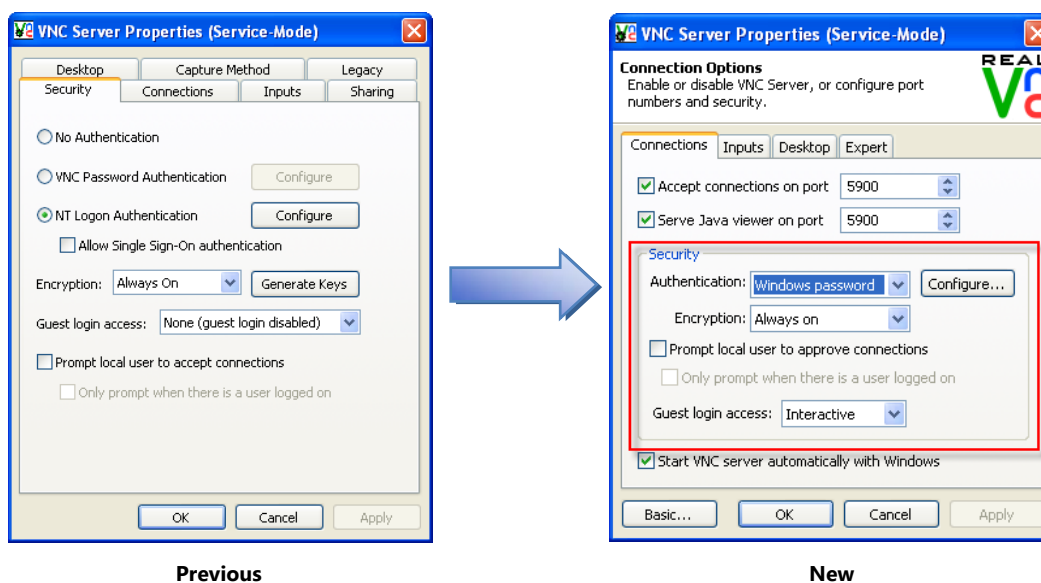


The first time that you start VNC Server 4.4, the Server Properties dialog will display in basic mode with the most frequently used configuration options. In order to display all of the available configuration options, click the **Advanced** button. (To switch back to basic mode, click the **Basic** button at any time).

THIS GUIDE WILL ASSUME THAT YOU ARE WORKING IN ADVANCED MODE.

Configuring Security

In previous versions of VNC, the Server Properties dialog opened to the *Security* tab:



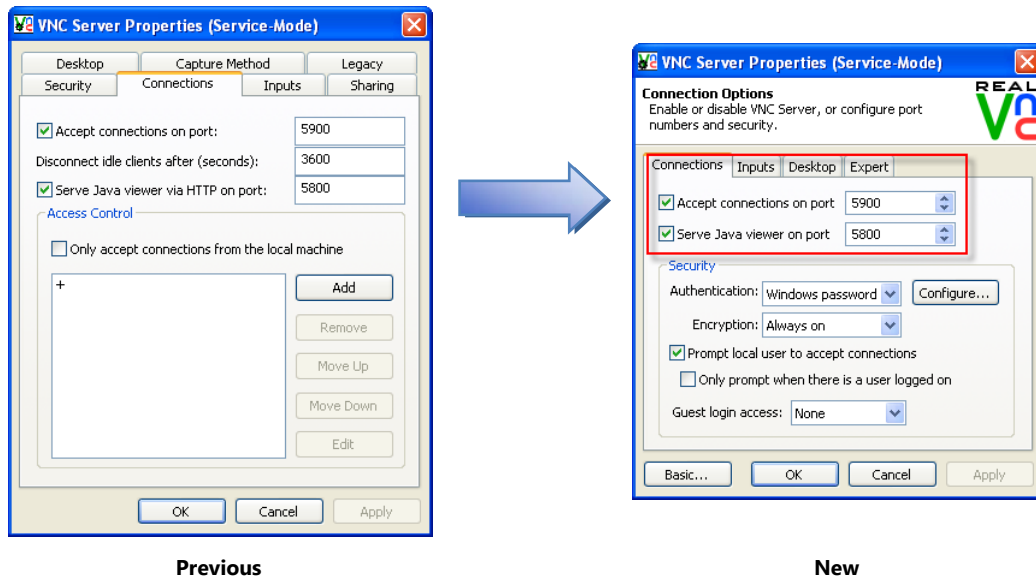
By default, in VNC Server 4.4, the Server Properties dialog now opens to the *Connections* tab, and the Security settings can be found on the same page, as highlighted above in red.

The table below summarises where the *Security* options can be found in VNC Server 4.4:

Previous Security options	New Security options
No authentication	Authentication drop-down box → <i>None</i>
VNC Password Authentication	Authentication drop-down box → <i>VNC password</i>
NT Logon Authentication	Authentication drop-down box → <i>Windows Password</i>
Allow single-sign-on authentication	Authentication drop-down box → <i>Single sign-on</i>
Encryption	Encryption drop-down box → <i>Always on, Prefer On, or Prefer Off</i>
Generate keys	Option removed. Keys now generated automatically.
Guest login access	Guest login access drop-down box.
Prompt local user to accept connections	<i>No change</i>
Only prompt where there is a user logged on	<i>No change.</i>

Configuring Connections

In previous versions, connections and access control were managed on the *Connections* tab. This has remained the same in VNC Server 4.4, but has been streamlined with some options renamed:.

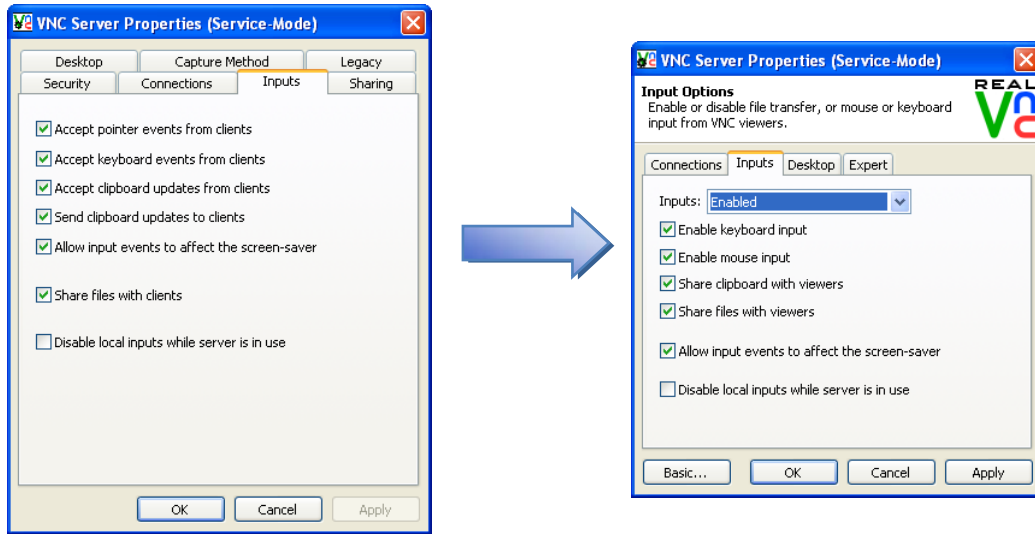


The table below summarises where the *Connections* options can be found in VNC Server 4.4:

Previous Connection options	New Connection options
Accept connections on Port	<i>No change</i>
Disconnect idle clients after	Expert tab → <i>IdleTimeout</i> → (enter time in seconds)
Serve Java Viewer via HTTP on port	Renamed to: <i>Serve Java viewer on port</i>
Access Control	Expert tab → <i>Hosts</i>

Configuring Inputs

In previous versions, input controls were managed on the *Inputs* tab. This has remained the same for VNC Server 4.4, but some of the options have been renamed.



Previous

New

The table below summarises the renaming of *Input* options in VNC Server 4.4:

Previous Input options	New Input options
Accept pointer events from clients	Enable mouse input
Accept keyboard events from clients	Enable keyboard input
Accept clipboard events from clients	Share clipboard with viewers
Send clipboard updates to clients	Share clipboard with viewers
Allow input events to affect the screen-saver	<i>No change</i>
Share files with clients	Share files with viewers
Disable local inputs while server is in use	Disable the server's keyboard and mouse when viewers are connected.



Configuring Sharing

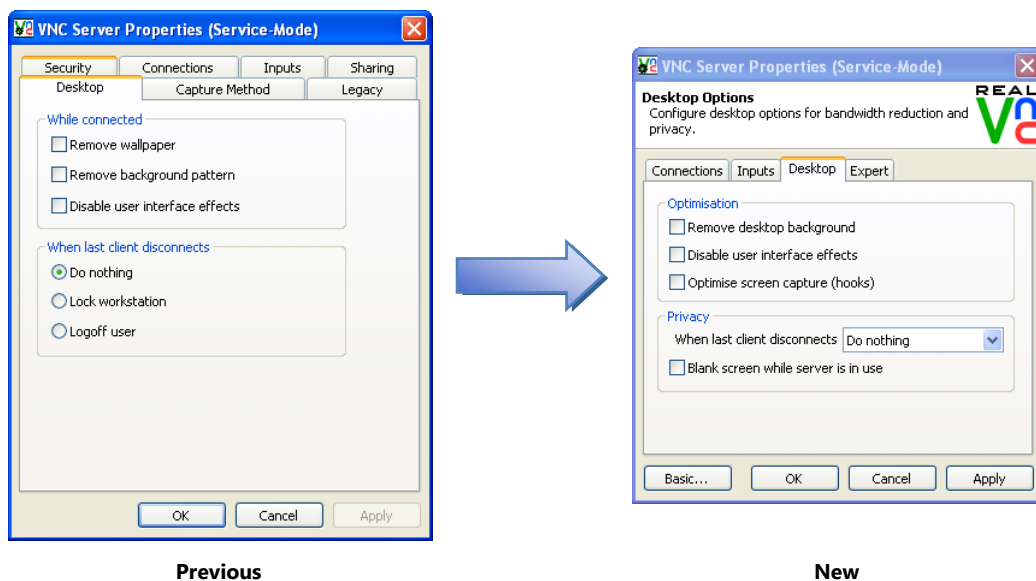
In previous versions, the rarely used *sharing* controls were managed on the *Sharing* tab. In VNC Server 4.4, all sharing options have been moved to the *Expert* tab – visible when the **Advanced** button has been selected on the VNC Server 4.4 Properties dialog.

The table below summarises the renaming and location of the sharing options in VNC Server 4.4:

Previous Sharing options	New Sharing options (Expert tab)
Always treat new connections as shared	Expert tab → <i>AlwaysShared</i> → True Expert tab → <i>NeverShared</i> → False
Never treat new connections as shared	Expert tab → <i>AlwaysShared</i> → False Expert tab → <i>NeverShared</i> → True
Use client's preferred sharing setting	Expert tab → <i>AlwaysShared</i> → False Expert tab → <i>NeverShared</i> → False
Non-shared connections replace existing ones	Expert tab → <i>DisconnectClients</i> → False

Configuring Desktop

In previous versions, Desktop effects were managed on the *Desktop* tab. This has remained the same for in VNC Server 4.4, but some of the options have been renamed.



The table below summarises the renaming and location of the new *Desktop* options in VNC Server 4.4:

Previous Desktop options	New Desktop options
While connected	Optimisation
Remove wallpaper	Remove desktop background
Remove background pattern	Remove desktop background
Disable user interface effects	Disable user interface effects
When last client disconnects	Privacy
Do nothing	Privacy drop-down list → <i>Do nothing</i>
Lock workstation	Privacy drop-down list → <i>Lock workstation</i>
Logoff user	Privacy drop-down list → <i>Logoff user</i> .

VNC Server 4.4 includes additional Desktop options, for more information on these please refer to the separate user guide.



Configuring Capture Method

In previous versions, Capture Method options effects were managed on the *Capture Method* tab. This has changed in VNC Server 4.4.

All of these options are now managed by the **Optimise Screen Capture** option on the *Desktop* tab, which adjusts your VNC display and by default, is optimised for performance. However, you can adjust the options by editing the settings in the *Expert* tab.

The table below summarises this:

Previous Desktop options	New Desktop options
Poll for changes to the desktop	Expert tab → <i>UpdateMethod</i> → 0
Use VNC hooks to track changes	Expert tab → <i>UpdateMethod</i> → 1
Poll console windows for updates	Expert tab → <i>PollConsoleWindows</i> → True
Use VNC Mirror driver to track changes	Expert tab → <i>UpdateMethod</i> → 2
Capture alpha-blended windows	Expert tab → <i>UseCaptureBLT</i> → True

VNC Server 4.4 includes additional Desktop options, for more information on these please refer to the separate user guide.

Legacy

The *Legacy* tab has been removed.

- If you would like to use 3.3 settings, we suggest that you import them into version 4.3 and only then upgrade to VNC Server 4.4.
- If you want to use protocol version 3.3, on the **Expert** tab, edit *Protocol3.3* to *True*.

If you have any difficulties using protocol version 3.3 please contact us at 4.4preview@realvnc.com